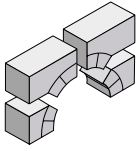


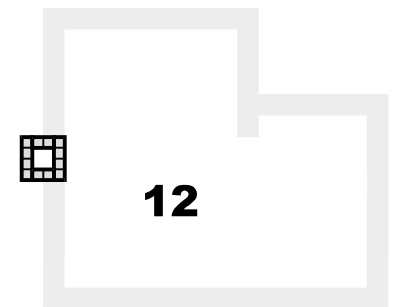
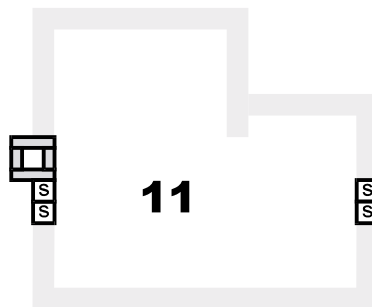
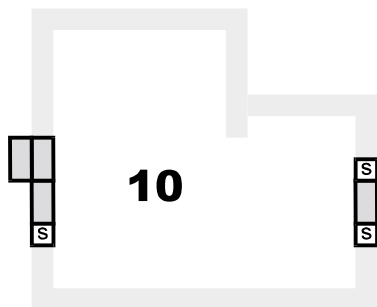
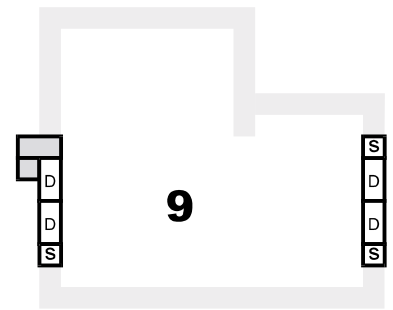
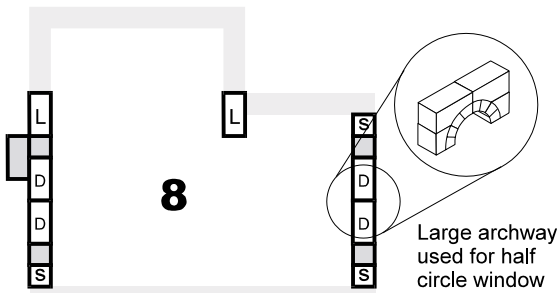
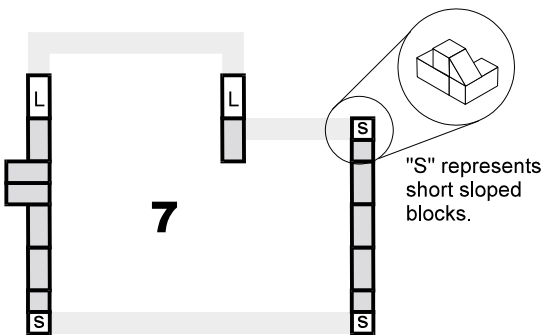
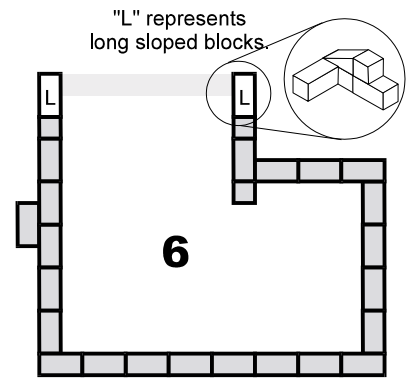
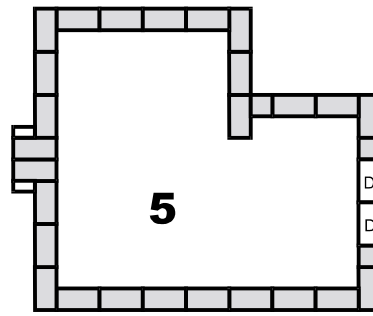
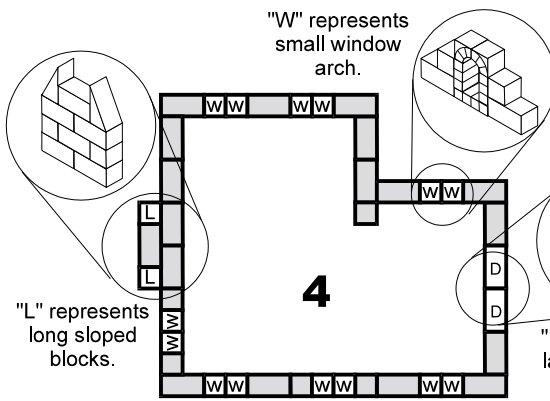
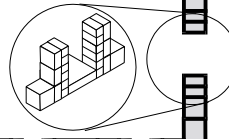
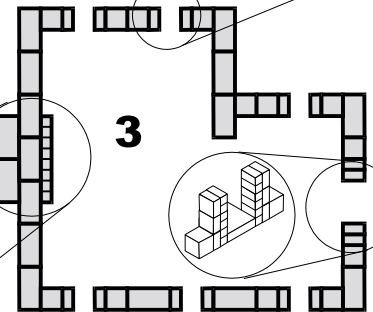
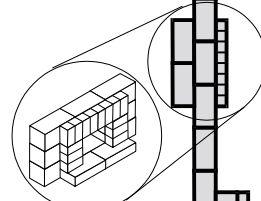
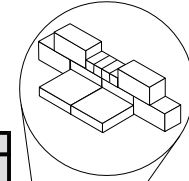
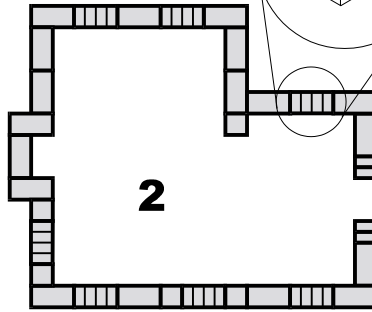
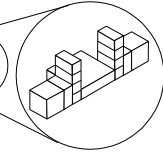
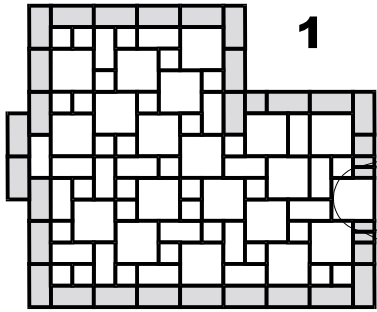
Dragon's Inn

This sheet shows a brick-by-brick layout of the Dragon's Inn. Step 1 is the floor, all the way up to step 12 which is the top of the chimney.



The large archway is made up of these four blocks.

You will have to trim these blocks down to fit the window doorway and fireplace



Place this template over a piece of cardboard or thick card stock. Using a ballpoint pen, press hard on the corners of roof section 1 indicated with circles..

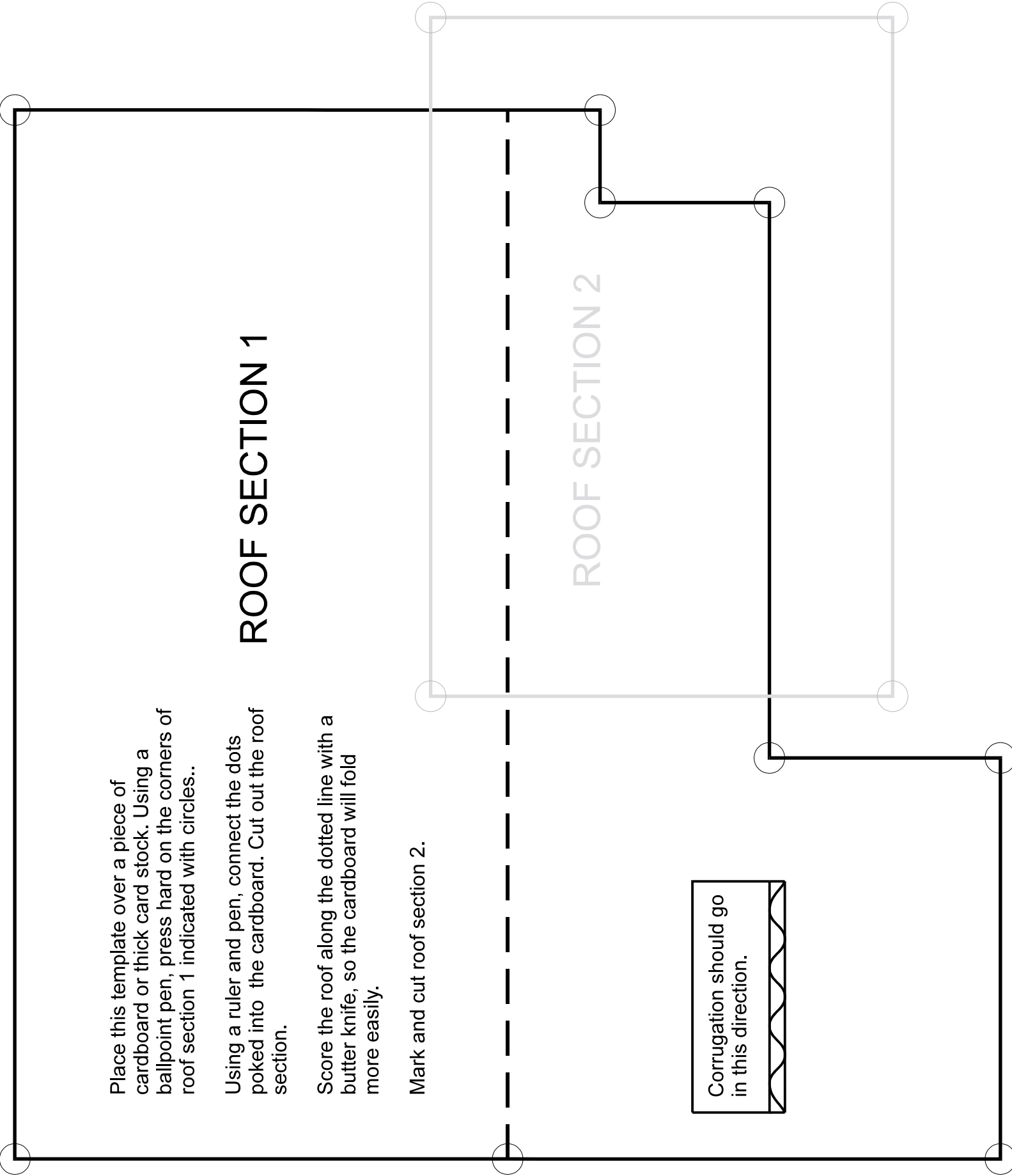
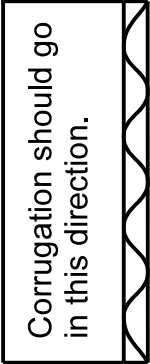
Using a ruler and pen, connect the dots poked into the cardboard. Cut out the roof section.

Score the roof along the dotted line with a butter knife, so the cardboard will fold more easily.

Mark and cut roof section 2.

ROOF SECTION 1

ROOF SECTION 2



The Dragon's Inn

Floorplan

Mount this floorplan to a piece of heavy stock (cereal box). Glue the floor tiles (shown darker) directly down to the floorplan.

Do not glue the outside ring of wall bricks to the floorplan or to the floor tiles. Simply glue the wall bricks together and rest them around the outside. This will allow you to remove the walls from the floor later on so you can paint the inside easily.

